



IPC-WP-113

# **Guidance for the Development and Implementation of a Red Plague Control Plan (RPCP)**

Developed by the Wire Harness Design Task Group (7-31k)  
and IPC-HDBK-620 Handbook Task Group (7-31h) of the  
Product Assurance Committee (7-30) of IPC

Users of this publication are encouraged to participate in the  
development of future revisions.

Contact:

IPC

# Table of Contents

<b>TECHNICAL BACKGROUND</b> .....	1	3.8.4 Cleaning Solvents .....	8
<b>1 GENERAL REQUIREMENTS</b> .....	2	3.9 Non-Conformance .....	8
1.1 Scope .....	2	<b>4 CAPPING</b> .....	9
1.2 Purpose .....	2	4.1 Shrink Tubing Method .....	9
1.3 Applicability .....	2	4.2 Dip Coating Method .....	9
1.4 Commercial Off-The-Shelf (COTS) .....	2	<b>5 ACRONYMS AND TERMS</b> .....	11
1.5 Existing or Previously Approved Designs .....	2	5.1 Capping .....	11
1.6 Measurement Units and Tolerances .....	2	5.2 Commercial-Off-The-Shelf (COTS) .....	11
1.7 Terms and Definitions .....	3	5.3 Dessicant .....	11
<b>2 APPLICABLE DOCUMENTS</b> .....	3	5.4 Dew Point .....	11
2.1 Federal Standards FED-STD-228 .....	3	5.5 Dry Pack .....	11
2.2 Military Standards .....	3	5.6 Glyptal (GLPT) .....	11
2.3 Industrial Standards .....	3	5.7 Government Source Inspection (GSI) .....	11
2.4 Reference Documents .....	4	5.8 Irreversible (Maximum) Humidity Indicator Card (i-HIC) .....	11
<b>3 RED PLAGUE CONTROL PLAN (RPCP)</b> .....	5	5.9 Red Plague (Cu <sub>2</sub> O) .....	11
3.1 Conductor Strand Material and Coating .....	5	5.10 Red Plague Control Plan (RPCP) .....	11
3.2 Silver Coating Thickness Requirements .....	5	5.11 Silver-Coated Copper-Alloy, 1 μm [~40 μin] (SCA) .....	11
3.2.1 SCC/SCA/SCU Conductor .....	5	5.12 Silver-Coated Copper-Alloy, 2 μm [~80 μin] SCA1 .....	11
3.2.2 SCC1/SCA1 Conductor .....	5	5.13 Silver-Coated Copper, 1 μm [~40 μin] (SCC) .....	11
3.2.3 Coating Finish (All Types) .....	5	5.14 Silver-Coated Copper, 2 μm [~80 μin] SCC1 .....	11
3.3 Procurement .....	5	5.15 Silver-Coated Ultra-High Strength Copper Alloy (SCU) .....	11
3.4 Fluorine Attack (White Plague) .....	6	5.16 Unit Pack (Dessicant) .....	11
3.5 Limited Life Article .....	6		
3.5.1 Surveillance (Functional Test) .....	6		
3.6 Environmental Requirements .....	6		
3.6.1 Packaging – Shipping and Storage .....	6		
3.6.2 Assembly Processes .....	7		
3.7 Quality Assurance .....	7		
3.7.1 Receiving Inspection .....	7		
3.7.2 Storage .....	8		
3.7.3 70% RH Indication .....	8		
3.8 Assembly Requirements .....	8		
3.8.1 Pre-Production Sample .....	8		
3.8.2 Wire Stripping .....	8		
3.8.3 Bend Radius .....	8		

## Figures

Figure 1-1 Red Plague (Cuprous Oxide Corrosion) .....	1
Figure 1-2 Close-Up View .....	1
Figure 3-1 Example of an Irreversible (Maximum) Humidity Indicator Card (i-HIC) .....	6

## Tables

Table 3-1 Conductor Strand Material and Coating Thickness .....	5
--	---

## Guidance for the Development and Implementation of a Red Plague Control Plan (RPCP)

### TECHNICAL BACKGROUND (Figures 1-1 and 1-2)

Red Plague (cuprous oxide corrosion) can develop in silver-coated soft or annealed copper conductors (component leads, single and multi-stranded wires and PCB conductors) when a galvanic cell forms between the copper base metal and the silver coating in the presence of moisture ( $H_2O$ ) and oxygen ( $O_2$ ). Once initiated, the sacrificial corrosion of the copper base conductor can continue indefinitely in the presence of oxygen, progressively reducing the electrical and mechanical integrity of the conductor (the degradation is particularly acute in thin conductors). The color of the corrosion by-product (cuprous oxide crystals) may vary depending on the different levels of oxygen available, but is commonly noted as a red/reddish-brown discoloration on the silver coating surface.

**Mechanical Damage** The primary initiator of Red Plague is mechanical damage of the silver coating during wire manufacturing (i.e., drawing, stranding, application of insulation jackets, etc.) resulting in exposure of the copper-silver interface to atmospheric moisture and oxygen. Other common sources of mechanical damage include improper assembly and installation practices (i.e., excessive flexing, improper bend radius, etc.).

**Environmental Conditions** In order for Red Plague to develop, a galvanic cell must form between the copper base metal and the silver coating in the presence of water ( $H_2O$ ) and oxygen ( $O_2$ ). Since only a small amount of water is required, protection from high humidity and oxygen and other contaminants such as aqueous solvents and cleaning systems is considered the greatest significant mitigation against Red Plague.

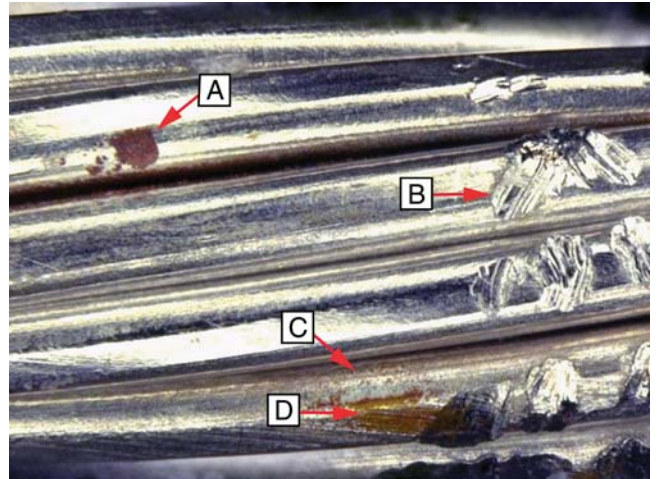
**Inadequate Silver Coating Thickness** Porous, discontinuous, and thin silver coatings are more likely to develop Red Plague since a greater number of sites for galvanic cells to form between the copper base metal and the silver plating are possible. Silver coating thicknesses below  $1\ \mu m$  [ $40\ \mu in$ ] are more easily damaged during manufacturing and handling, thus increasing susceptibility. Increasing the silver coating thickness to  $2\ \mu m$  [ $80\ \mu in$ ] has shown improved resistance to corrosion.

**High Temperature** Though the upper continuous operating temperature rating of most silver-coated wiring is  $+200\ ^\circ C$  [ $+392\ ^\circ F$ ], exposure to temperatures approaching  $+200\ ^\circ C$  [ $+392\ ^\circ F$ ] or higher induces migration of the copper base metal through the silver coating. This may reduce the silver coating thickness and create porosity sites for cuprous/cupric oxide corrosion to occur. This effect is typically experienced in instances where the wiring is exposed to excessive heat during test or highly accelerated burn-in.

**Chemical Attack** Exposure to chemicals present in the environment (oxygen, sulfur compounds, salt, etc.) may result in corrosion and corrosion by-products that attack and compromise the mechanical integrity of the silver coating. Common



**Figure 1-1 Red Plague (Cuprous Oxide Corrosion)**  
Photo Courtesy of NASA



**Figure 1-2 Close-Up View AS22759 Stranded, Silver-Coated Copper Wire Showing Varying Stages of Red Plague, Damaged Plating, Mechanical Damage, Porosity, and Exposed Copper**

Photo Courtesy of NASA

- A. Damaged Plating Site (Red Plague)
- B. Mechanical Damage (Recent)
- C. Porosity Sites with Red Plague
- D. Exposed Copper with Red Plague